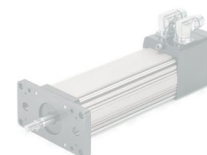
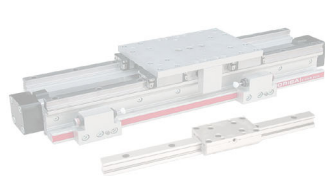




**Carolina Fluid Components, LLC**

Toll Free: 888-696-0356

9309 Stockport Place  
Charlotte, NC 28273



## Intelligent Motion Control

- APPLIED MOTION PRODUCTS** Cost-effective Stepper and Servo Motors, Drives, Position Controllers and Software for economical and reliable motion control.
- BIMBA** Pneumatic and Electro-Mechanical Actuators and Motion Control Solutions for any environment and condition.
- CONTROL TECHNIQUES** AC and DC variable speed drives, servos and power conversion equipment for commercial and industrial applications.
- DELTA COMPUTER SYSTEMS** High Precision Motion Controllers for hydraulic, pneumatic, or electro-mechanical applications.
- EATON/VICKERS** Axis Pro high performance proportional valves provide a wide range of flows and unique control options.
- ENFIELD TECHNOLOGIES** Servo-Pneumatic Systems provide infinitely variable control of pneumatic devices such as air cylinders and pressure vessels.
- EPSON** Robotic automation solutions using SCARA, Cartesian, and 6 Axis platforms. Companies rely on Epson Robots to reduce production costs, improve product quality, increase yields and help increase the bottom line.
- EXLAR** Electric actuators with a wide-range of capabilities, power and performance in both linear and rotary configurations. Exlar offers robust, reliable and cost-effective solutions for nearly any motion application.
- HANNA** Hydraulic Actuators with a variety of feedback devices and mounting styles to easily fit in the most demanding motion control applications.
- HIGH COUNTRY TEK** Digital and Analog Electronic Controller products. A versatile product that works with any manufacturer of hydraulic or pneumatic valves.
- HORNER APG** Controllers with operator interface, built-in I/O, networking, and removable memory in a single compact unit providing a better solution for OEMs, integrators and end-users.
- MTS TEMPOSONICS** Position and Velocity Transducers with a wide range of mounting and output types.
- NORGREN** Pneumatic NFPA and Rodless Actuators provide economical and reliable solutions.
- PARKER-ORIGA** Pneumatic and Electro-Mechanical Actuators and Guide Bearings for higher load, demanding applications.
- SMC** High-precision positioning and repeatability define the SMC range of electric actuators. The electric cylinder and e-Rodless series of electric actuators provide basic linear movements similar to a pneumatic cylinder, but with no need for compressed air.
- SUN HYDRAULICS** Motion Control for demanding mobile and industrial applications is achieved by combining Sun's broad range of proportional control technology, high performance load control valves, and industry leading custom manifold design.

*Not all lines available in all states.*

Phone 704-588-6101 | Fax 704-588-6115 | [www.cfcsite.com](http://www.cfcsite.com)



**Carolina Fluid Components, LLC**

Toll Free: 888-696-0356

9309 Stockport Place  
Charlotte, NC 28273

## Intelligent Motion Control



---

## Technical Services

### AUTHORIZED REPAIR FACILITY

Emergency Service  
Technical Support  
OEM Quality Parts  
FREE Written Repair Evaluations

### SYSTEM DESIGN & FABRICATION

Hydraulic Power Units and Controls  
Pneumatic Panels and Systems  
Control Systems  
OEM Kitting/Sub-Assemblies

09/14

Phone 704-588-6101 | Fax 704-588-6115 | [www.cfcsite.com](http://www.cfcsite.com)